

FiberLink G360

10/100/1000Base-TX to 1000Base-SX/LX SFP (Mini GBIC) Media Converter

Overview

The FLG-360L-v2 Gigabit Ethernet media converter is designed to bridge a 10/100/1000Base-TX signal to a 1000Base-SX/LX signal. It's used to extend the connection distance between two Gigabit Ethernet Twisted-pair devices via fiber cable transparently with no performance degradation. The Gigabit converter is supported 10/100/1000Base-TX Auto-negotiation & Auto MDIX. The converter supported flow control function both on Twisted-pair port and Fiber port.



FLG-360L_v2 also supports LLCF (Link Loss Carry Forward) and LFP (Link Fault Pass) function via DIP switch setting. In media converter application, the LLCF/LFP mechanism will force copper port or fiber port to link down once the other port's linkage of FLG-360L fails, which keeps the Link status of the two ends of media converter synchronized.

Features

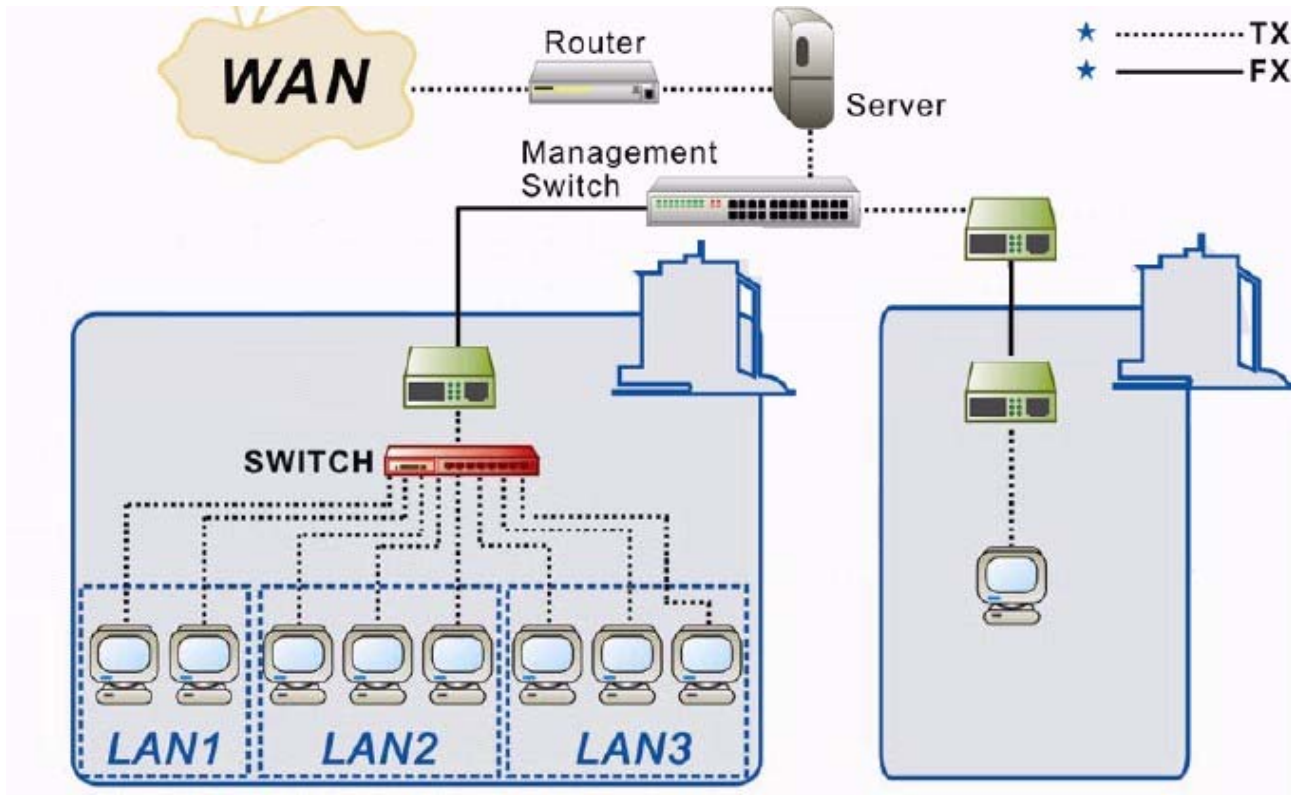
- Comply with IEEE 802.3 10Base-T, IEEE 802.3u 100Base-TX, 802.3ab 1000Base-TX
- Compliant with IEEE 802.3z 1000BaseSX/LX Gigabit Ethernet Standards
- Store and Forward Switching Mechanism
- Auto- Negotiation in TP port
- Auto-Cross over for MDI/MDIX in TP port
- Support Flow Control
- Support Jumbo frame 9K bytes
- Support LLCF (Link Loss Carry Forward) and LFP (Link Fault Pass)
- One 10/100/1000BaseT Gigabit Ethernet TP Port
- One 1000BaseSX/LX Gigabit SFP (Mini GBIC) Fiber port
- Provide 19" Converter Chassis for up to 16 slots with redundant power supply for optional expansion use
- Provide On/Off switch for LLCF/ LFP function :

DIP Switch	ON	OFF
1	LLCF/LFP Enable	LLCF/LFP Disable

Specifications

Standards	<ul style="list-style-type: none"> ● IEEE802.3 10Base-T ● IEEE 802.3u 100Base-T ● IEEE 802.3ab 1000Base-TX ● IEEE 802.3z 1000Base-SX/LX ● IEEE 802.3x flow control
Protocol	<ul style="list-style-type: none"> ● CSMA/CD
Network Media	<ul style="list-style-type: none"> ● 1000Base-TX EIA/TIA 568 Category 5,5e or 6 UTP/STP twisted pair cable ● 1000Base-SX: 50/125μm or 62.5/125μm multi-mode fiber optic cable ● 1000Base-LX:9/125μm single-mode fiber optic cable
Connector	<ul style="list-style-type: none"> ● 1 * 10/100/1000Base-TX port ● 1 * 1000Base-SX/LX SFP (Mini GBIC) open slot
Data transfer rate	<ul style="list-style-type: none"> ● 2000Mbps/Full-Duplex
Wavelength	<ul style="list-style-type: none"> ● 850nm for 1000Base-SX ● 1310nm for 1000Base-LX ● 1550nm for 1000Base-LH
Distances support	<ul style="list-style-type: none"> ● Twisted pair 100 meter ● 220meter for 62.5/125μm multi-mode fiber optic cable ● 550meter for 50/125μm multi-mode fiber optic cable ● Upto 70km for 9/125μm single-mode fiber optic cable
LED indicators	<ul style="list-style-type: none"> ● System – Power LED ● TP port – 100M/Act, & 1000M/Act ● Fiber port – Link/Act
Dimension	<ul style="list-style-type: none"> ● 102 mm x 74 mm x 22 mm (L*W*H)
Temperature	<ul style="list-style-type: none"> ● Operating – 0°C to 40°C ● Storage – -20°C to 90°C
Power	<ul style="list-style-type: none"> ● 5VDC, 2A external power adapter

Application



Ordering Information

FLG-360L (ver. 2) : 10/100/1000Base-TX to 1000Base-SX/LX SFP (Mini GBIC) Media Converter

** Product specification subject to change without notice.*