



FiberLink-200 User's Manual

10/100TX / 100FX Fiber Optic Converter

fully compliant with the IEEE 802.3u
10/100Base-TX / 100Base-FX
Standard



www.linkpro.com.tw

10/100TX / 100FX Fiber Optic Converter

It is a Fast Ethernet 10/100Base-TX to Fiber 100Base-FX converter, which is fully compliant with the IEEE 802.3u standard, features one fiber port using SC or ST connector and one STP RJ-45 10/100Base-TX port. It supports conversion of Fast Ethernet 10/100Base-TX port to fiber optic cabling. It is automatic for either full or half duplex mode. Full-duplex cabling provides bandwidth of up to 200Mbps and allows for transmission distance up to 2 km over multi mode fiber or up to 100 km over single mode fiber. FiberLink200 also provides 8 Jumpers for advance function setting, such as fix mode duplex, speed, Flow control...etc.

Specifications

- IEEE802.3u Fast Ethernet 10/100Base-TX and 100Base-FX standards
- Features STP and Fiber connector
 - RJ45 and SC connector (multi-mode)
 - RJ45 and SC connector (single-mode)
 - RJ45 and ST connector (multi-mode)
- Data Transfer Rate: 10/100Mbps(half duplex),
20/200Mbps(Full duplex)
- Auto-MDIX for STP 10/100 port
- Support Store-and-Forward and Modified Cut-and-through mode
- Support Upto 1600 bytes packet size.

- Support 802.3x collision base backpressure.
- TX Duplex Mode: Full or Half duplex mode (default : Auto-Negotiation)
- LED: Power, speed, FX Link/Act, TX Link/Act and half/full duplex
- Power Requirement: Max. 2.0Watt (external switching power adapter DC5V/1000mA)
- Ambient Temperature: 0°C to 50°C
- Humidity: 5% to 90%
- Dimension: 25(H) x 95(W) x 75 mm (L)
- Cable:
 - UTP: Cat. 5 UTP cable
 - Fiber: 62.5/125um multi-mode fiber optic cable, upto 2Km
 - 10/125um single-mode fiber optic cable, upto 100Km depends on the fiber transceiver.

10/100TX / 100FX Fiber Optic Converter

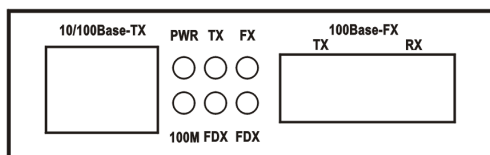
Package Contents

Before going any further, please make sure that you have the following parts in this package.

- One FL-200SC (or ST) Fiber Optic converter
- One External AC to DC power adapter (5VDC 1A)
- One user's manual

NOTE: Please DO NOT use any other power adapter for FL-200SC/ST

Panel Contents :



LED	Mark	State	Description
POWER	PWR	ON	Power is received
		OFF	Power is not received
100Mbps	100M	ON	TP port work on 100M speed
		OFF	TP port work on 10M speed
TX Link/Act	TX	ON	A TX port good Link status has been established.
		Blinking	During Data Transfer or Receiving
FX Link/Act	FX	ON	A FX port good Link status has been established.
		Blinking	During Data Transfer or Receiving
Full Duplex	FDX	ON	TX/FX port working on Full duplex mode

Port Description:

PORT	Mark	Description
TX	10/100Base-TX	It is connected to LAN card or connected to hub
100FX	100Base-FX	It is connected to other end of Fiber Optic Transceiver.

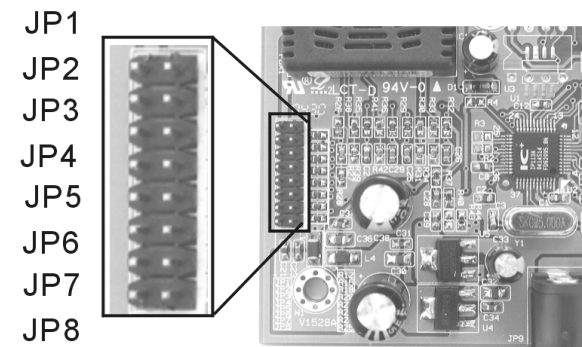
****Note : The TX port support Auto-negotiation for 10/100M and Auto-MDI/MDIX capability.**

Converter Advance function Setting :

There are 8 Jumpers on the PCB board, refer to below table for detail :

JP1	open	System reserved (default)
JP2	Open	System reserved (default)
JP3	Open	System reserved (default)
JP4	close	TP port supports auto-negotiation with limited capability (defined in JP6)
	open	TP port supports auto-negotiation with 10M/100M, full/ half capability (default)
JP5	close	802.3X enable on TX and FX port
	open	802.3X disable on TX and FX port
JP6	close	Set TX port work on 100M speed (Valid when JP4 close)
	open	Set TX port work on 10M speed (Valid when JP4 close)
JP7	close	Set TX port on Half Duplex mode
	open	Set TX port on Full Duplex mode
JP8	close	Set FX port on Half Duplex mode
	open	Set FX port on Full Duplex mode

To set advance function of Converter, please remove the upper case and find out the Jumpers location as below:



Jumpers Location of FL-200SC/ST

Ordering Information:

- FL-200ST : 10/100TX to 100FX Fiber Optic Converter ST connector, Multi-mode 2KM
- FL-200SC : 10/100TX to 100FX Fiber Optic Converter SC connector, Multi-mode 2KM
- FL-200SC15: 10/100TX to 100FX Fiber Optic Converter SC connector, Single-mode 15KM
- FL-200SC40: 10/100TX to 100FX Fiber Optic Converter SC connector, Single-mode 40KM
- FL-200SC60: 10/100TX to 100FX Fiber Optic Converter SC connector, Single-mode 60KM
- FL-200SC80: 10/100TX to 100FX Fiber Optic Converter SC connector, Single-mode 80KM
- FL-200SC100: 10/100TX to 100FX Fiber Optic Converter SC connector, Single-mode 100KM